

## CHAPTER 11

### JOHN CRIDDLE

(LORIN CRIDDLE'S PATERNAL GRANDFATHER)

#### Historical Sketch of John Criddle

Prepared for the Driggs-Criddle Reunion, September 1950

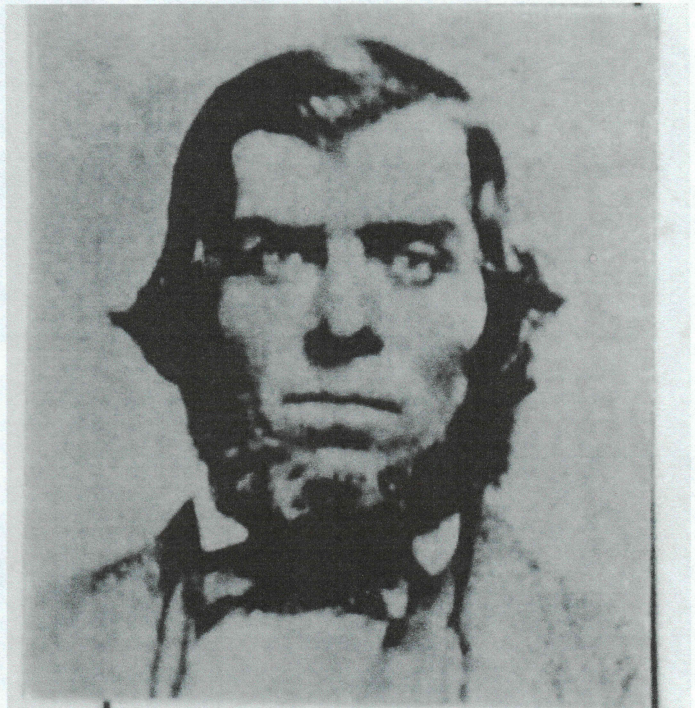
By granddaughter, Alta Criddle Hess

John Criddle

John Criddle was born December 25, 1826 in Parish of Oldcleve, Sommershire, England, just across the bay from Cardiff, South Wales. He was the son of William Criddle and Elizabeth Rossiter, and the grandson of James Criddle and Hannah Baggs. John was the fifth child in a family of seven: four boys and three girls, William, Mary Elizabeth, Harriet, John, James and George.

They were farmers and humble in circumstances but honest and sincere in their everyday living. John was unassuming in the character and followed the "Mormon Creed" strictly, namely "to mind your own business."

John Criddle heard and accepted the gospel in England, being baptized by Ebenezer A. Williams. He was the only one of the family who joined the church, thus fulfilling the scripture "one of a family."



He came to America in 1853 on a sail ship, which made the trip in six weeks. His first home in Utah was at Jedediah's M. Grant's, where he spent the first winter, that of 1853. In the spring of 1854 he went to the First Presidency to be directed to something as a means of support. He was told there was a widow with five children, twenty-two miles north of Salt Lake at Fort Keys Ward (now known as Kaysville) on a thirty-acre farm. Her name was Elizabeth Ann Taylor Driggs (see Chapter 9). "She needs help. Will you go and help her?"

John came out and worked on the farm that spring and in June (or September) he and Elizabeth Ann Taylor Driggs were married. (Samuel Driggs died the 16<sup>th</sup> of January 1854).

John Criddle had left a sweetheart, Mary Lluellen, in England. At the time of his marriage to Elizabeth Ann Driggs, John Criddle stood proxy for Samuel Driggs and Mary Lluellen was sealed to John. It was a brave act for John Criddle, a lone man, to come out here where he had no relatives or friends.